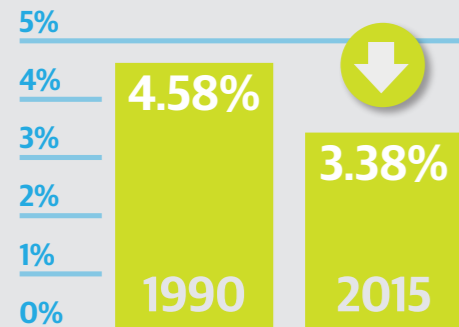


THE WORLD

POPULATION
7.3 BILLION



CHANGE IN PREVALENCE OF VISUAL IMPAIRMENT



55% OF VISUALLY IMPAIRED PEOPLE ARE WOMEN

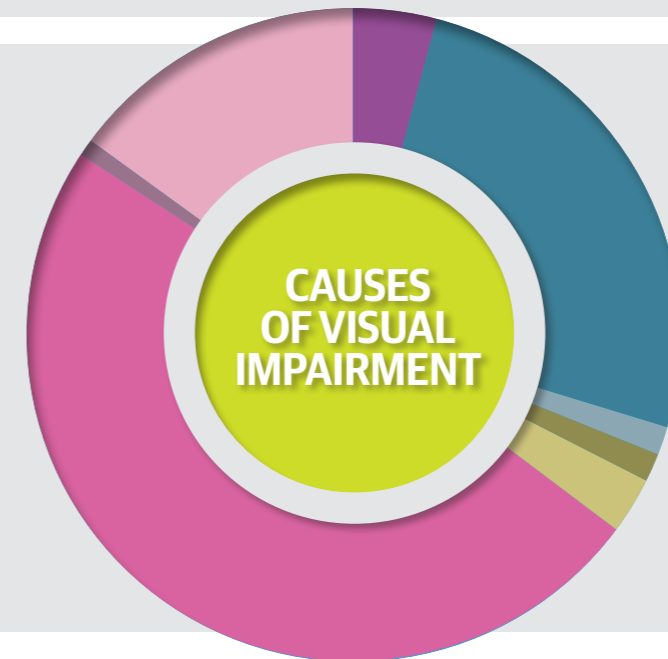
89% OF VISUALLY IMPAIRED PEOPLE LIVE IN LOW & MIDDLE INCOME COUNTRIES



1.1 BILLION PEOPLE WITH NEAR-VISION IMPAIRMENT



SIMPLY BECAUSE THEY DO NOT HAVE A PAIR OF SPECTACLES



- AMD 4.2%
- Cataract 25.5%
- Corneal Opacity 1.6%
- DR 1.2%
- Glaucoma 2.8%
- URE 49.0%
- Trachoma 0.7%
- Other 14.9%

>75% OF VISUAL IMPAIRMENT IS AVOIDABLE

The number of visually impaired, the percentages for women and for those living in low and middle income countries, and the change in prevalence, all relate to distance-vision impairment. MSVI = the number with severe or moderate visual impairment. In order to enable comparisons over time, the age-standardised prevalence (all ages) is shown. An ultra-conservative definition of avoidable blindness is shown based upon the prevalence of Cataract, Refractive Error and Trachoma only. Other conditions are at least partially avoidable.

The latest estimates for 2015 produced by the Vision Loss Expert Group and published in the Lancet