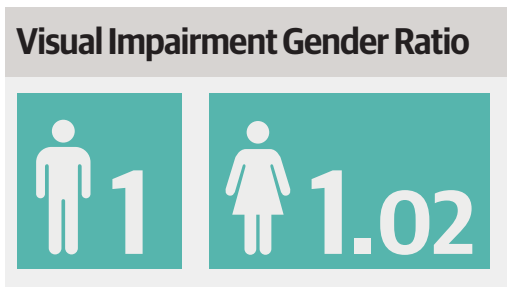
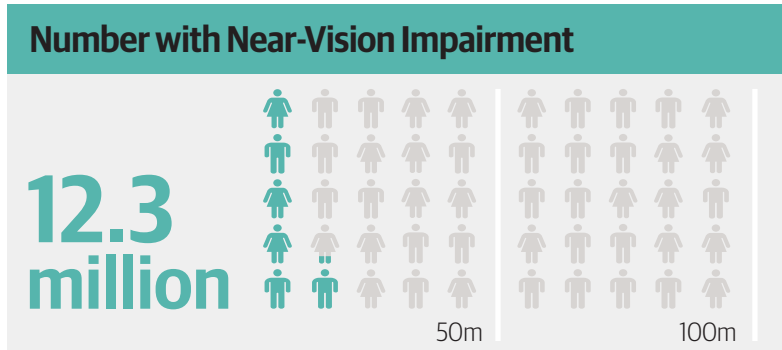
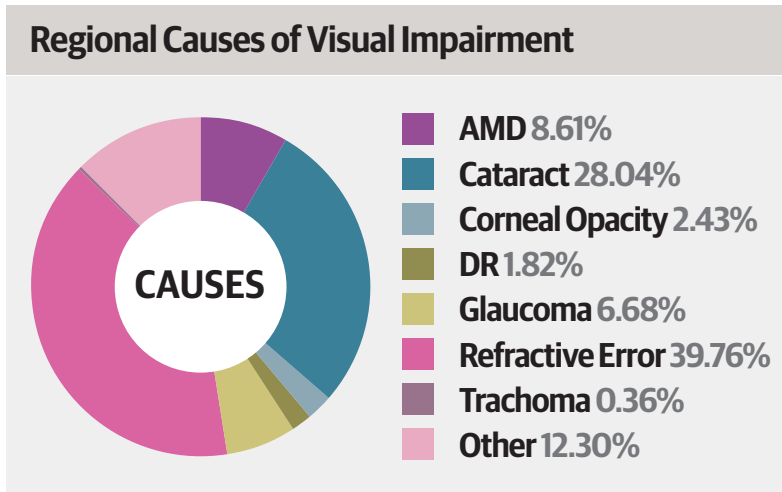
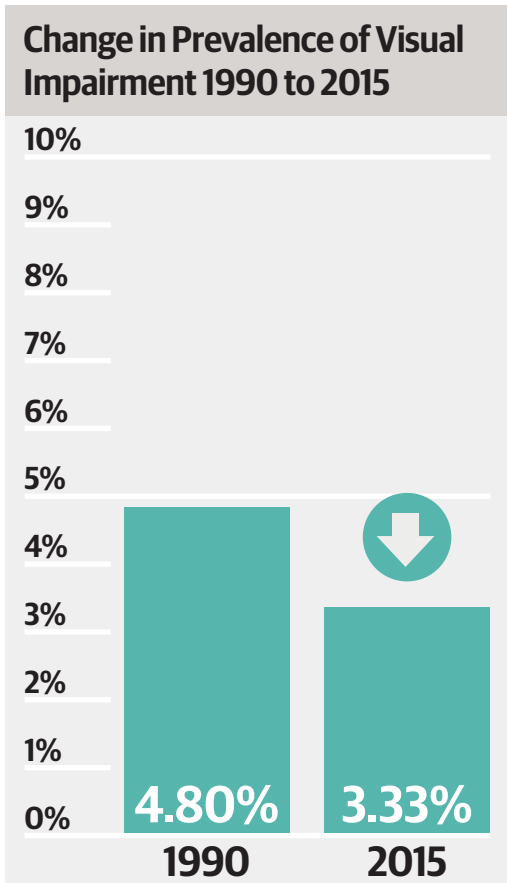
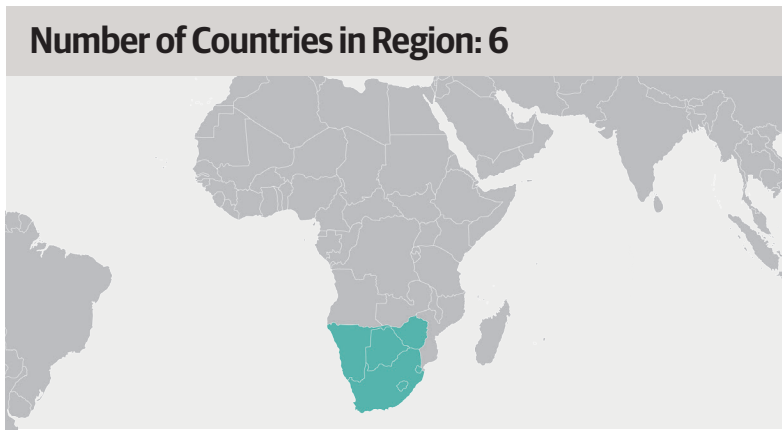


Southern Sub-Saharan Africa Population: 78 Million

Number Blind
419,063

Number MSVI
1,231,151



The number visually impaired, prevalence and causes all relate to distance-vision impairment

In order to enable comparisons between regions, over time and between men and women, the age-standardised prevalence (all ages, both sexes) is shown

The gender ratio is the age-standardised prevalence for women divided by the age-standardised prevalence for men