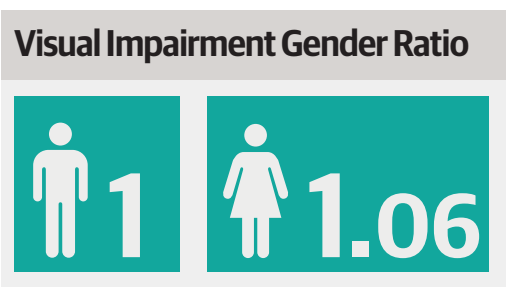
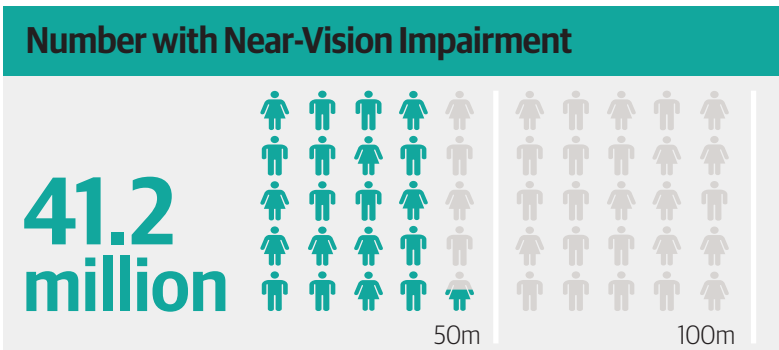
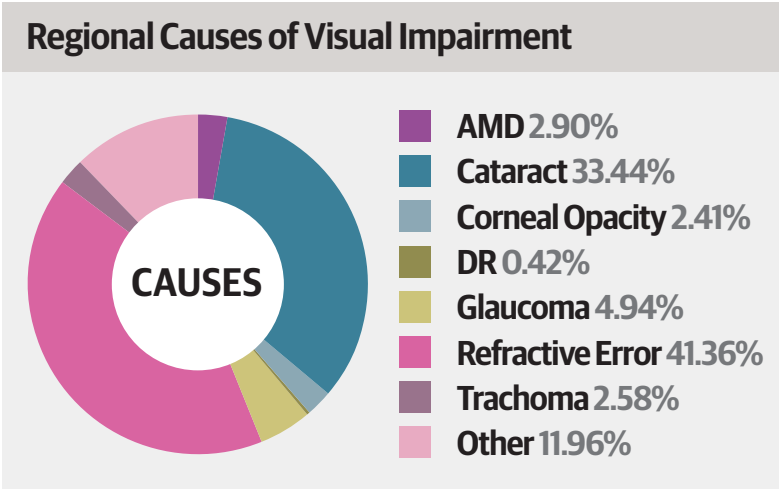
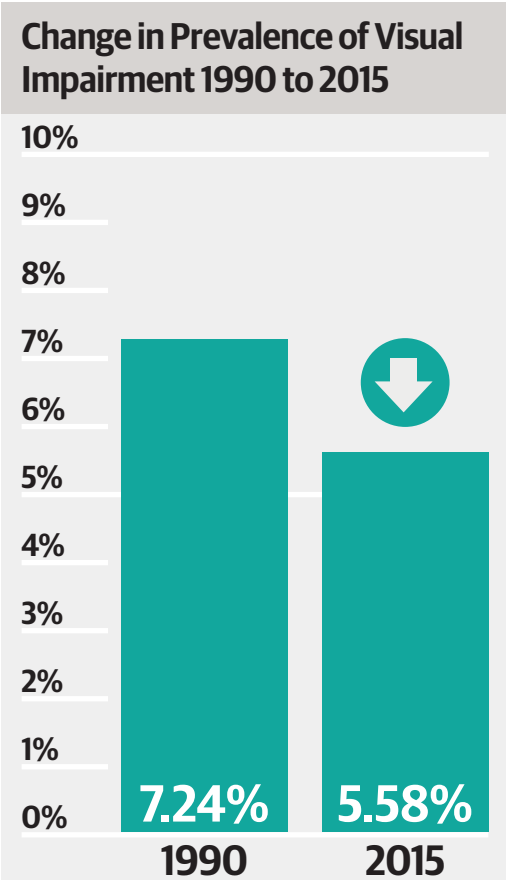
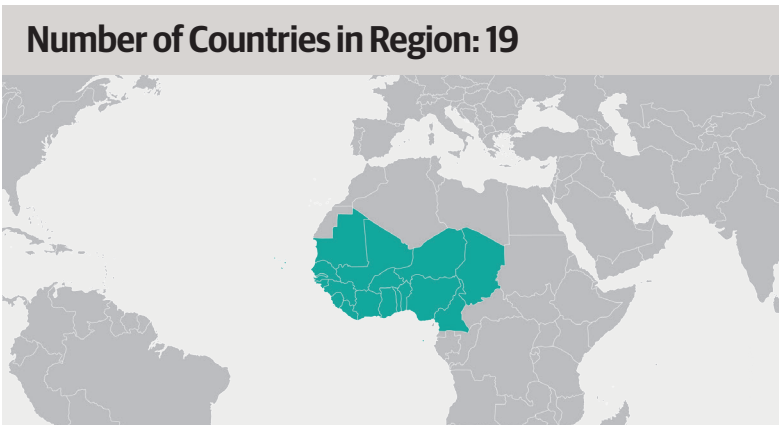


Western Sub-Saharan Africa Population: 391 Million

Number Blind
1,891,551

Number MSVI
7,854,587



The number visually impaired, prevalence and causes all relate to distance-vision impairment

In order to enable comparisons between regions, over time and between men and women, the age-standardised prevalence (all ages, both sexes) is shown

The gender ratio is the age-standardised prevalence for women divided by the age-standardised prevalence for men

Data correct as of 12th October 2017